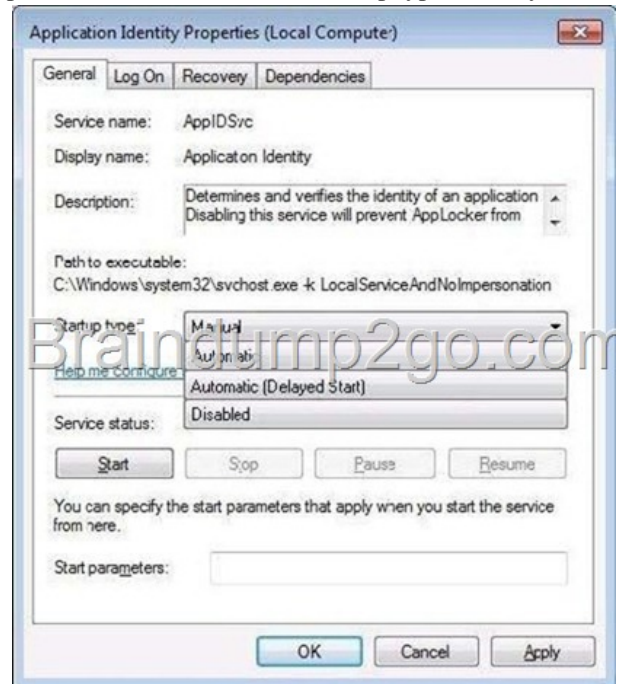
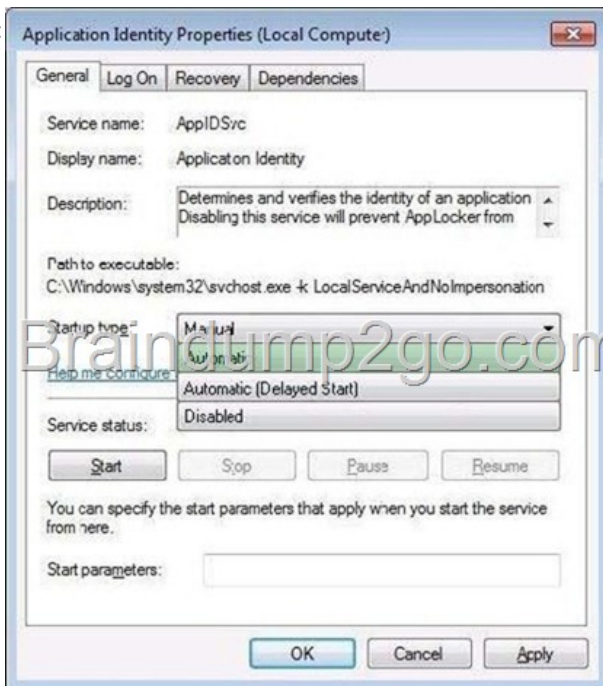


Official 2014 Latest Microsoft 70-680 Exam Dump Free Download(71-80)!

QUESTION 71 A company has client computers that run Windows 7. You create an AppLocker policy for the client computers. You need to ensure that the AppLocker policy is enforced after the computers restart. Which service startup type should you use? (To answer, select the appropriate setting or settings in the work area.)

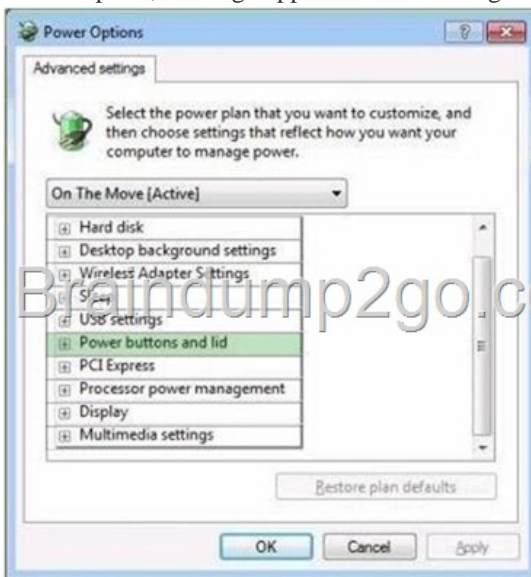


Answer:

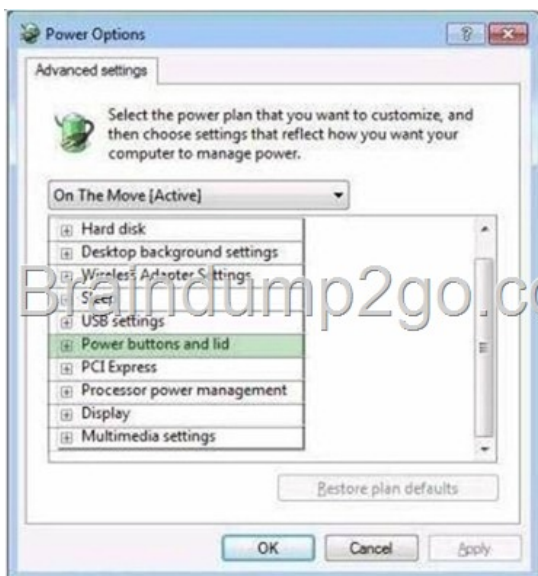


QUESTION 72 Note: This QUESTION is part of a series of QUESTIONs that use the same set of answer choices. An answer choice may be correct for more than one QUESTION in the series. A company has client computers that run Windows 7 Enterprise. The company also has a file server running Windows Server 2008 R2 that is configured to use BranchCache. The branch office with the client computers has a slow network connection to the office with the file server. Users complain of poor performance when connecting to the file server from their client computers. You need to verify that the client computers are configured to be BranchCache clients. Which two choices should you use to achieve this goal? (Each correct answer presents a complete solution. Choose two.) A. Device Manager B. The Local Users and Groups C. Share Permissions D. The Folder Properties window E.

The Netsh command F. The Icacls command G. The Services Management console H. The Group Policy Management console I. The User Account Control Settings Control Panel window Answer: EH Explanation: To enable BranchCache on Windows 7 client computers using Group Policy, you must first create a Group Policy object (GPO) that will carry the BranchCache configuration. After creating the GPO, you configure the setting that enables BranchCache and choose whether BranchCache will operate in Distributed Cache mode or Hosted Cache mode. To create a GPO, enable BranchCache, and select the cache mode Click Start, point to Administrative Tools, and click Group Policy Management Console. Client configuration using netsh When configuring client computers, you can enable BranchCache and choose between Distributed Cache mode and Hosted Cache mode with a single netsh command. QUESTION 73 You are running Windows 7 on a portable computer. A custom power plan named "On The Move" is optimized for battery life. The computer enters sleep mode when the portable computer is closed. You need to change a setting so that when you close the portable computer, nothing happens. Which setting should you change? (To answer, select the appropriate setting in the work area.)



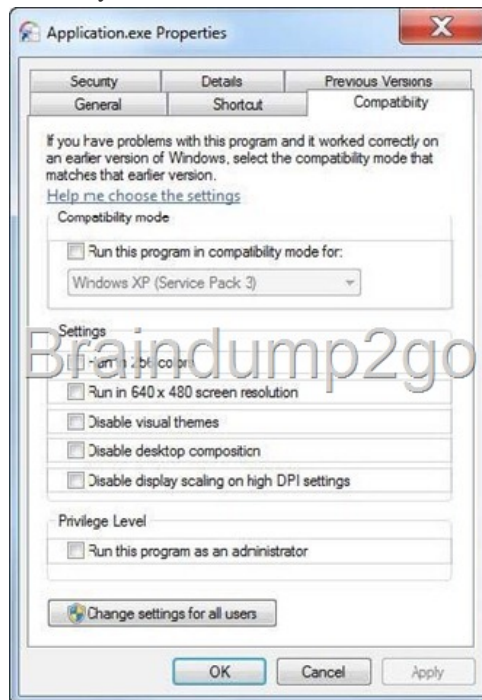
Answer:



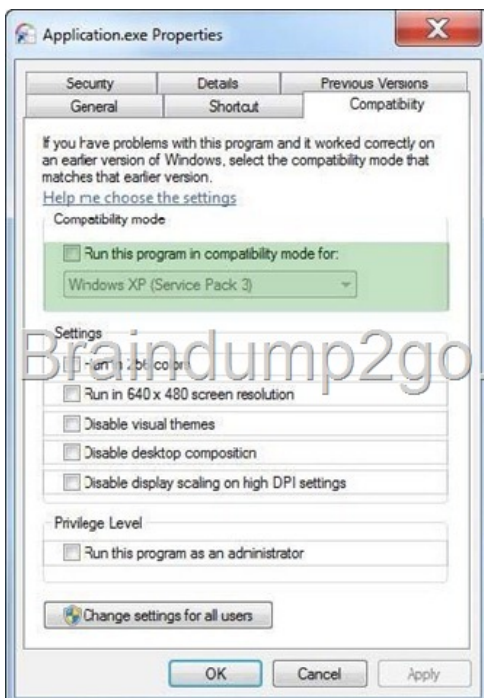
QUESTION 74 Note: This QUESTION is part of a series of QUESTIONS that use the same set of answer choices. An answer choice may be correct for more than one QUESTION in the series. A company has a server running Windows Server 2008 R2, with Windows Deployment Services (WDS), the Microsoft Deployment Toolkit (MDT), and the Windows Automated Installation Kit (WAIK) set up. The company also has client computers running Windows 7 Enterprise. You are preparing to capture an image of a Windows 7 client computer. You need to ensure that the captured image is generic and does not contain the device drivers from the client computer. What should you do? A. Use Sysprep with an answer file and set the PersistAllDeviceInstalls option in the answer file to True. B. Run the Start /w ocsetup command. C. Run the PEImg /Prep command. D. Run the Dism command with the

/Mount-Wim option. E. Use Sysprep with an answer file and set the UpdateInstalledDrivers option in the answer file to No. F. Run the Dism command with the /Add-Driver option. G. Use Sysprep with an answer file and set the UpdateInstalledDrivers option in the answer file to Yes. H. Run the BCDEdit /delete command. I. Run the ImageX command with the /mount parameter. J. Run the Dism command with the /Add-Package option. K. Add a boot image and create a capture image in WDS. L. Use Sysprep with an answer file and set the PersistAllDeviceInstalls option in the answer file to False. M. Run the Diskpart command and the attach command option. Answer: L Explanation: Persisting Plug and Play Device Drivers During generalize You can persist device drivers when you run the Sysprep command with the /generalize option by specifying the PersistAllDeviceInstalls setting in the Microsoft-Windows- PnP Sysprep component. During the specialize configuration pass, Plug and Play scans the computer for devices and installs device drivers for the detected devices. By default, these device drivers are removed from the system when you generalize the system. If you set PersistAllDeviceInstalls to true in an answer file, Sysprep will not remove the detected device drivers. For more information, see the Unattended Windows Setup Reference (Unattend.chm).

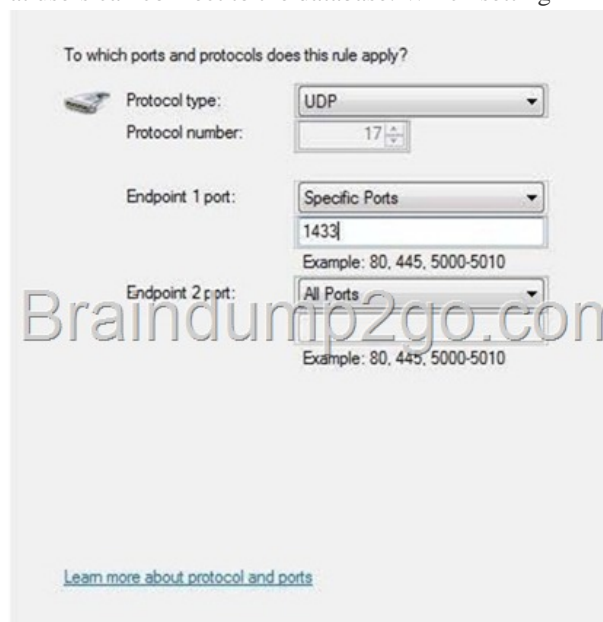
[http://technet.microsoft.com/en-us/library/dd744512\(W.S.10\).aspx](http://technet.microsoft.com/en-us/library/dd744512(W.S.10).aspx) QUESTION 75 You have upgraded a Windows XP system to Windows 7. One of the applications is not showing menus when you launch it under Windows 7. How do you fix this issue? (To answer, select the appropriate setting in the work area.)



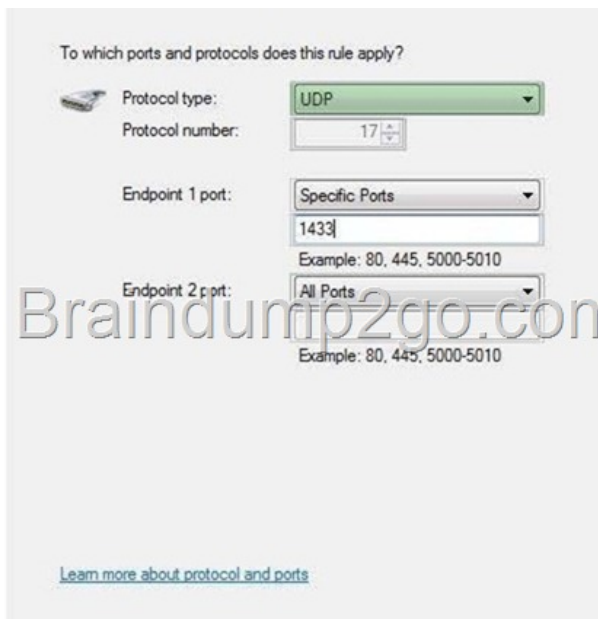
Answer:



QUESTION 76 Note: This QUESTION is part of a series of QUESTIONS that use the same set of answer choices. An answer choice may be correct for more than one QUESTION in the series. You have a computer running Windows 7. You create a VHD and install Windows 7 in it. You reboot your system and notice that the boot menu now shows two installations of Windows 7. How do you fix it? A. Use Sysprep with an answer file to disable one installation. B. Run the BCDEdit command. C. Run the Start /w ocsetup command. D. Run the Dism command. E. Add a boot image and create a capture image in WDS. F. Run the PEImg /prep command. G. Run the ImageX command with the /mount parameter. H. Run the Dism command with the /Mount-Wim option. I. Run the Dism command with the /Add-Package option. J. Run the Diskpart command and the attach command option. K. Add a boot image and create a capture image in WDS. Answer: B Explanation: BCDEdit Command-Line Options Boot Configuration Data (BCD) files provide a store that is used to describe boot applications and boot application settings. The objects and elements in the store effectively replace Boot.ini. BCDEdit is a command-line tool for managing BCD stores. It can be used for a variety of purposes, including creating new stores, modifying existing stores, adding boot menu options, and so on. BCDEdit serves essentially the same purpose as Bootcfg.exe on earlier versions of Windows, but with two major improvements: BCDEdit exposes a wider range of boot options than Bootcfg.exe. BCDEdit has improved scripting support. Note Administrative privileges are required to use BCDEdit to modify BCD. BCDEdit is the primary tool for editing the boot configuration of Windows Vista and later versions of Windows. It is included with the Windows Vista distribution in the %WINDIR%System32 folder. BCDEdit is limited to the standard data types and is designed primarily to perform single common changes to BCD. For more complex operations or nonstandard data types, consider using the BCD Windows Management Instrumentation (WMI) application programming interface (API) to create more powerful and flexible custom tools. **QUESTION 77** A user is attempting to connect to a secure remote Microsoft SQL database on a computer running Windows 7 Professional. The computer communicates on port 1433. A rule in Windows Firewall with Advanced Security allows communication. The user cannot connect to the database on the currently defined protocol due to an error in protocol type. You need to ensure that users can connect to the database. Which setting should you choose? (To answer, select the appropriate setting in the work area.)



Answer:

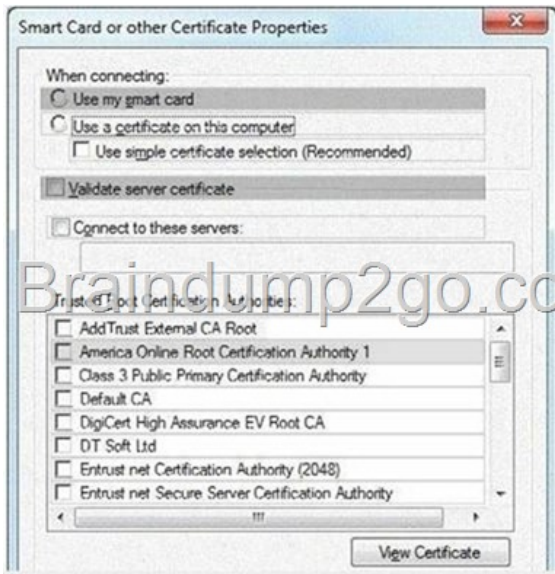


] QUESTION 78 A network contains computers that run Windows 7 and Windows Vista. A computer named Computer1 runs Windows 7. You need to ensure that only users running Windows 7 and Windows Vista can connect to Computer1 using Remote Desktop. In the System Properties window, on the Remote tab, what should you do? A. Click the Advanced button. Select the Allow this computer to be controlled remotely check box on Computer1. B. Select the Allow connections only from computers running Remote Desktop with Network Level Authentication (more secure) check box on Computer1. C. Select the Allow connections from computers running any version of Remote Desktop (less secure) check box on Computer1. D. Select the Allow Remote Assistance connections to this computer check box on Computer1. Answer: B

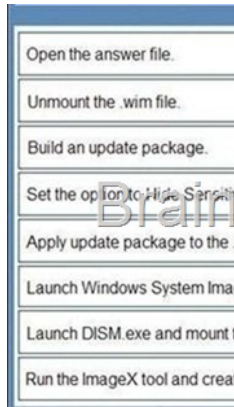
QUESTION 79 You administer portable computers that have Windows 7 installed. The computers connect to a wireless network that uses WPA2- Enterprise Security. The company's security policy requires multifactor authentication for the portable computers. You need to manually configure each portable computer to meet the following requirements: Users must provide multifactor authentication. The Server Certificate held on the portable computers must match the certificate held on the server. What should you do? (To answer, configure the appropriate option or options in the dialog box in the answer area.)



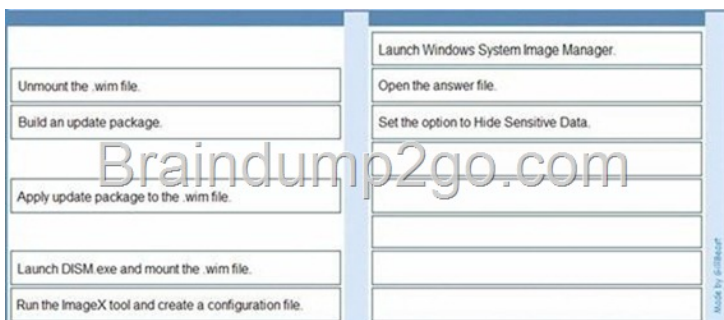
Answer:



QUESTION 80 You administer Windows 7 Enterprise computers in your company network. All computers are deployed from a single Windows image (.wim). You want to deploy the .wim file to newly purchased computers by Windows Deployment Services (WDS). You need to protect an administrator account password used for deployment in an answer file. What should you do? (To answer, move the appropriate actions from the list of actions to the answer area and arrange them in the correct order.)



Answer:



Passing Microsoft 70-680 Exam successfully in a short time! Just using Braindump2go's Latest Microsoft 70-680 Dump:
<http://www.braindump2go.com/70-680.html>